

Oboe

Written for the Cygnus Ensemble  
**Shatter Moments**

Jessica Rudman (b. 1982)

Fiercely ca. ♩ = 108 - 120

3

5

7

11

13

16

18

21

*f*

*ff*

*mf*

*p*

*f*

*f dolce*

*n*

*f*

*ff*

*p*

with Vc. -----

27

24

*n* *ff* *fff*

28

*mp* *f* *p* *n*

31

*f* *p*

43

42

*pp* *f*

46

*p* *ff*

52

50

*n* *ff*

55

\* sing smaller notes in any octave

**60**

*ff* shrill and accented

**67** ←  $\text{♪} = \text{♪} \rightarrow$  (ca  $\text{♪} = 108-120$ )

*n* *ff*

**71**

*mf* *ff* *p*

**75**

*ff*

rit. . . . .

**81** Extremely Free ca.  $\text{♪} = 88 - 100$

Flute Solo

**76**

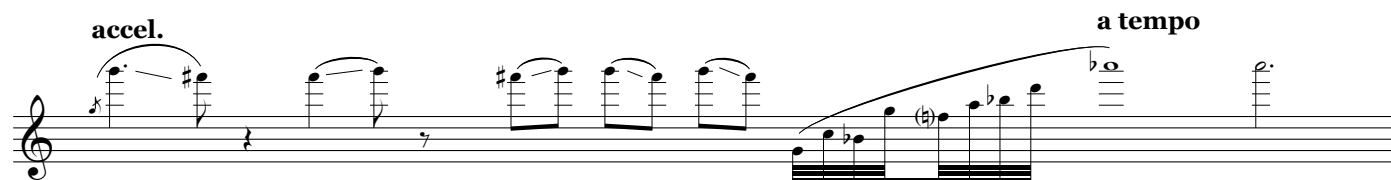
2

9

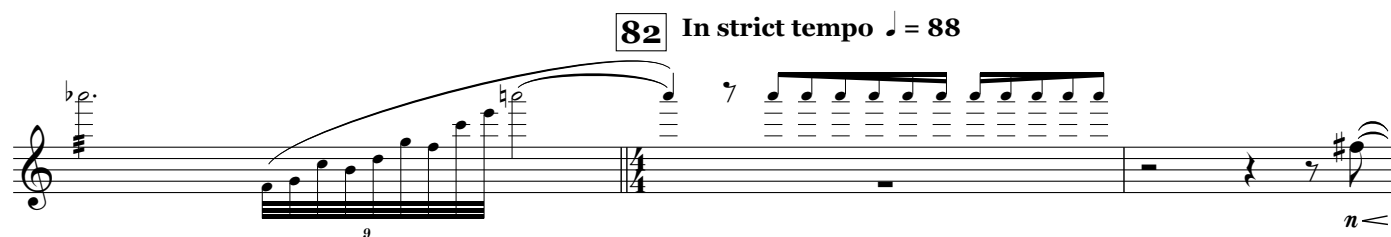
11

13

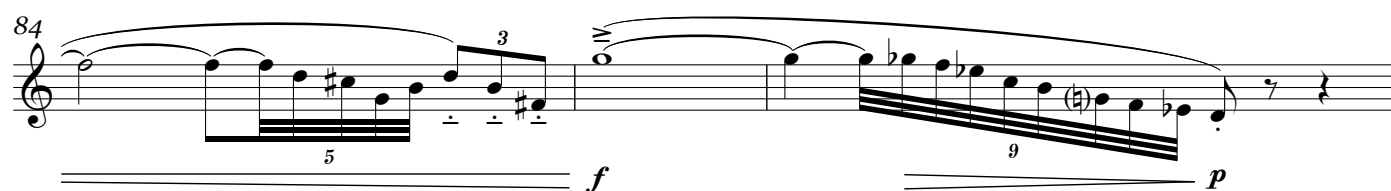
accel. a tempo



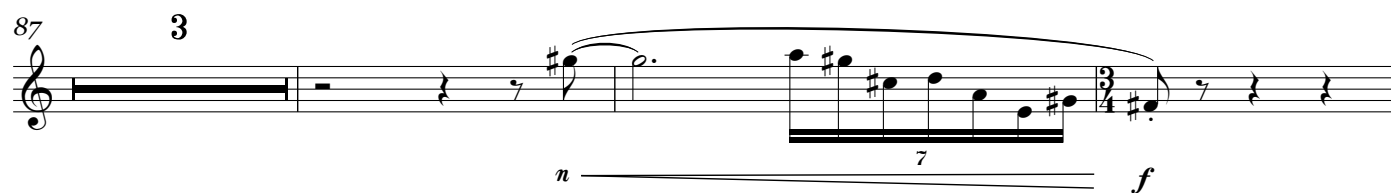
**82** In strict tempo ♩ = 88



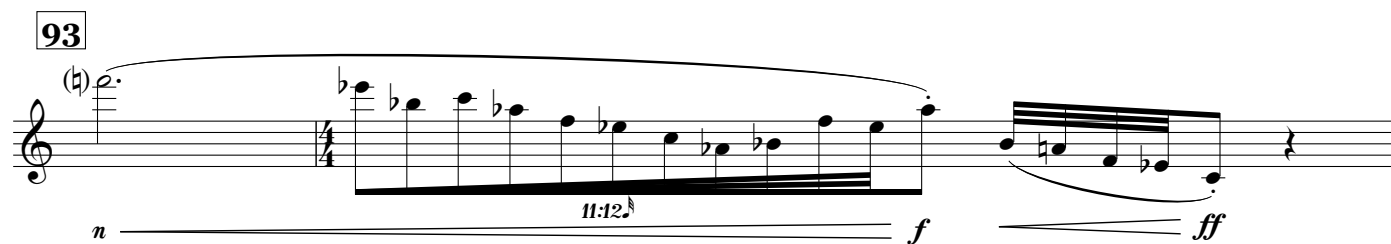
84



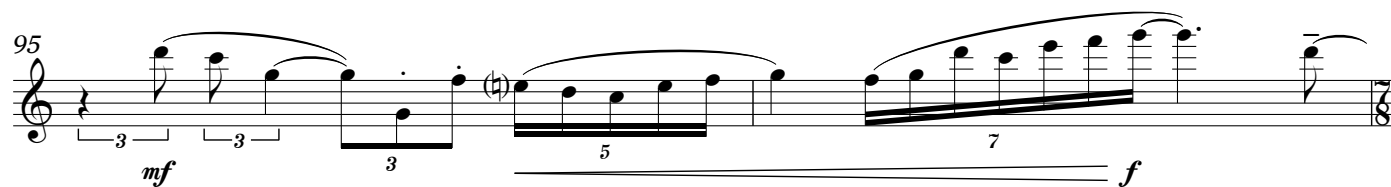
87



**93**



95



97



100

9 *p* 5 *f* 7 3

rit. . . . . **106** accel. . . . .

102

5 *mp* *n* 3 3 3 *n*

107

*f* *p* *ff* 3 3 3 3 3

109

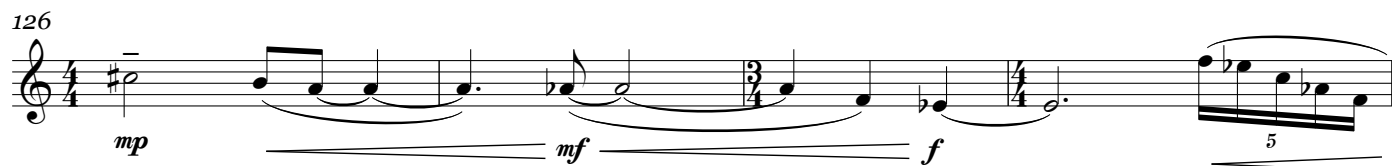
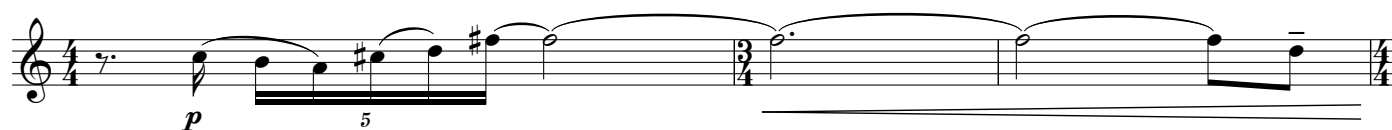
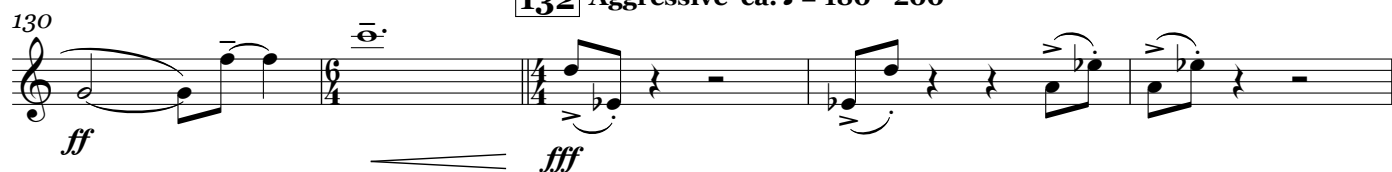
*p* *mp* 3 3 3 3 3

**112** Capricious ♩ = 120 2

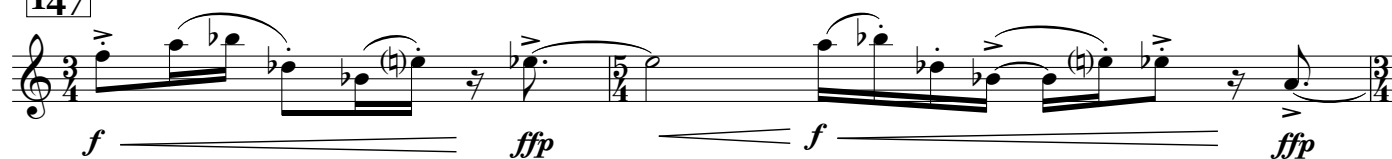
*ff* *f* 3 3 3 3 3

118

*p* 2 rit. 3 3 3 3 3

**123** Dream-like ♩ = 80**132** Aggressive ca. ♩ = 180 - 200

← ♩ = ♩ → (ca ♩ = 120 - 132)

**147**

149

*ff* *f* *ff*

152

*f*

155

*ff* *mf*

158

*ff* *mp* *fp*

161

*mf* *mp*

163 *molto rit.*

164

*mf* *n*

**Suddenly As Fast as Possible**

169

*pp* *fff*